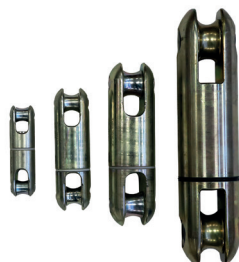
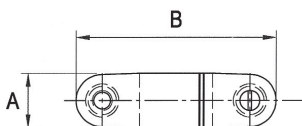


# UNDERGROUND CABLE LAYING ACCESSORIES

## 250...R

### SWIVEL JOINT

Made of high tenacity galvanized steel, it is used as a junction element.



MODEL	A	B	Rope Ø	Capacity	Breaking load	Weight
	mm	mm	mm	kN	kN	kg
250 AR	32	120	15	26,7	80	0,50
250 BCR	45	170	19	60	180	1,20
250 DR	60	212	24	120	360	3,00
250 ER	77	320	28	250	750	8,20

## 461

### PULLING HEAD FOR UNDERGROUND LAYING OF UNIPOLAR INSULATED CABLES

Galvanized steel body with swivel eyelet, complete with interchangeable conical jaws. Supplied with transport box.



MODEL	Suitable for cables					
	Section mm <sup>2</sup>	Ø mm	Standard supply	Ø mm	kN	kg
461/240	95/150/240/300	11,5/13,8/18,3/20,7	95/150/240	60	25	2
461/1000	400/500/630/800/1000	23,4/25,4/29,4/30,4/36,3	630/800/1000	105	60	8
461/1600	400/630/1000/1600	22,4/29,4/37,4/47,4	1600	110	80	9

## 465

### PULLING HEAD FOR UNDERGROUND LAYING OF PREFORMED INSULATED CABLES

3x (1x95 mm<sup>2</sup>), 3x (1x150 mm<sup>2</sup>) and 3x (1x240 mm<sup>2</sup>).

Galvanized steel body with swivel eyelet, it is fixed directly to the cables. Each set is supplied in transport box complete with two heads (95-150), (150-240) and hex keys.

